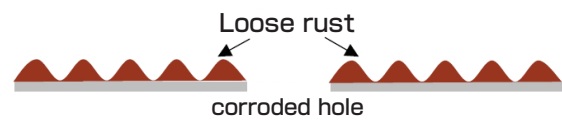
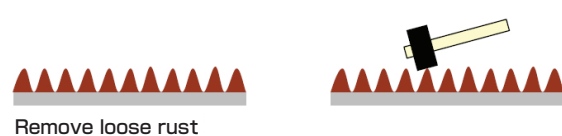


Process chart for repairing holes created by rust and Rust preventive system

Working process and scope



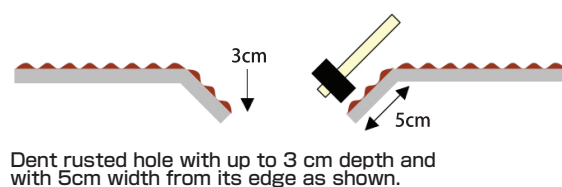
1. Hammering



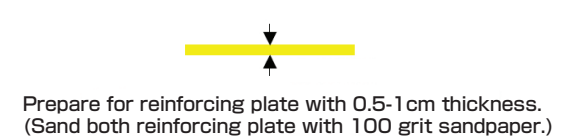
2. Sanding with a wire brush



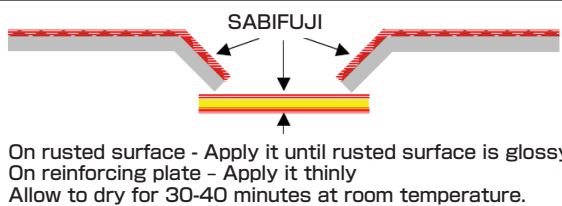
3. Denting hole created by rust



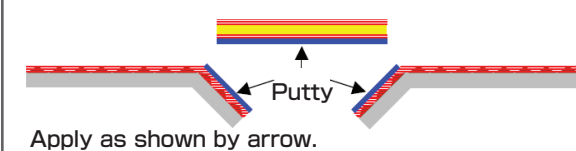
4. Preparing for reinforcing plate



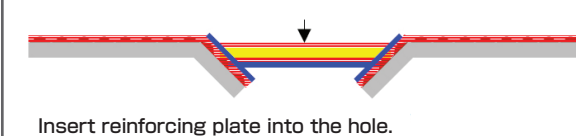
5. Applying SABIFUJI



6. Applying ALUMINUM PUTTY rust preventive J



7. Reinforcing



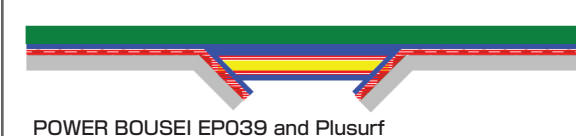
8. Fixing reinforcing plate



9. Sanding ※



10. Undercoating, middlecoating ※



11. Topcoating ※



※When you use urethane topcoat (strong solvent type) for automotive work, please work as follows.

9. Sanding

Allow to dry for over 12 hours at room temperature or air-drying time for 30-40 minutes. Then, force dry at 60-80°C. Also, allow to dry for more than 2 hours. Sand the putty.

10. Undercoating, middlecoating

For automotive work, apply POWER BOUSEI Plusurf(hardening progress type) for faster curing time.

11. Topcoating

When using a topcoat with strong solvents, use POWER BOUSEI Plusurf. After spraying it, force dry at 80°C for 30-40 minutes. Then, take flash time for 5-6 hours.

【Manufactures】

Somay-Q Technology Corp.

5971-31, Morokurihashi, Goka-machi, Sashima-gun, Ibaraki
306-0313 Japan
TEL.0280-80-0005 FAX.0280-80-0006
E-mail:support@somayq.com http://www.somayq.com

【Main Agent】

CBC AMERICA LLC

2000 Regency Parkway, Suite 600 | Cary, NC 27518
www.cbcamerica.com
Chemicals & Pharmaceuticals Division
Jeff Crawford
t: +1 919.230.2273

Somay-Q rust preventive series catalogue

Only Somay-Q rust preventive system can solve serious problems with rust!!!!

染めQ 防錆シリーズ

— Somay-Q rust preventive series —



*Incredible power to stop **rust**.*



For various surfaces

Powerful Adhesion!

Long-lasting resistance to corrosion

For all steel structures and more!

**Somay-Q
POWER RUST STOP series
Line-up**

- POWER BOUEI EP039
- POWER BOUEI AP089
- POWER BOUEI EP1000
- SABIFUJI
- ALUMINUM PUTTY "J" rust preventive

POWER BOUSEI prevention series

※DIRECTIONS FOR USE. Please read the product catalog for each product.

Incredible power to prevent rust,
but very easy to use.

POWER BOUSEI EP039 Rust Preventive Primer

【POWERBOUSEI EP039】epoxy high solid primer can build dry film thickness over 75u per coat for excellent resistance to friction, chemicals and moisture. It is a 2-component modified polyamide epoxy primer that allows for a long recoating time up to 30 days. EP039 is a high performance primer that is effective, economical and easy to use.

Substrates

- Rusted surfaces
- Galvanized steel (both cold and hot dipped)
- Concrete
- Structural steel
- Steel plates, etc.



Product	Size	Coverage	Quantity
POWER BOUSEI EP039 SET ※	10kg	159～265 g/㎡	1 set
EP REDUCER	3.7L		4cans

※1set= Basic component plus activator (5 kg cans)

Suitable for topcoating for EP039

POWER BOUSEI AP089 rust preventive topcoat for outdoor use

【POWER BOUSEI AP089】is Acryl modified polyurethane topcoat which provides saving time, pollution reduction, finishing with just one coating. It can be sprayed on the rust surface with minimum sanding and provide excellent resistance to weathering, chemicals and corrosion.

Substrates

- Rusted surfaces
 - Steel
 - Steel plate
 - Chemical conversion coating surface
 - Existing finish
 - ※Galvanized steel (Both cold and hot dipped) etc
- ※ Please contact to R&D



Product	Size	Coverage	Quantity
POWER BOUSEI AP089 Base	3.5kg	167～280g/㎡	1
POWER BOUSEI AP089 Activator	0.7kg		1
AP REDUCER	3.7L		4cans

Strong adhesion and protection
on rusted surface

POWER BOUSEI EP1000 rust preventive topcoat (for indoor use)

【POWER BOUSEI EP1000】high solid type can build dry film thickness 125-200u per coat. Especially, it can adhere to serious rusted surface with minimum surface preparation. It is a high solid modified epoxy topcoat. It provides VOC compliant and high penetration power.

Substrates

- Rusted surfaces
- Galvanized steel (both cold and hot dipped)
- Aluminum
- Stainless steel
- Existing finish
- Concrete
- Tile etc.



Product	Size	Coverage	Quantity
POWER BOUSEI EP1000 Light color	4.5kg	230～240g/㎡	1 set
POWER BOUSEI EP1000 Deep color	4kg		4cans
POWER BOUSEI EP1000 Activator (Quick-dry)	5kg		
EP REDUCER	3.7L		

SABIFUJI

【SABIFUJI】is a strong 1 component penetrating primer. It penetrates deeply into the rusted surface and prevents the rust completely. It enhances hardness of existing lacquer and synthetic paints to become more resistant to solvents and delamination.

Color Brown(almost transparent)

Product	Size	Coverage	Quantity
SABIFUJI	16L	50～100g/㎡	1cans
	3.7L		4cans
SABIFUJI with brush	0.9L		6cans
	0.3L		6cans

Rust Preventive Primer



ALUMINUM PUTTY "J" rust preventive

【ALUMINUM PUTTY “J” rust preventive】is able to adhere to galvanized steel (both cold and hot dipped) well. It can repair parts to withstand heavy weights and fill up the hole, especially surfaces unable to weld. Moreover, it is hard and flexible putty bearable for strong impacts. (added fiber)

Substrates Aluminum, Stainless steel, steel,
galvanized steel (both cold and hot dipped),concrete etc

Color Silver

Product	Size	Quantity
ALUMINUM PUTTY "J" rust preventive	4kg	4cans

Common hardener J
(separate sale)

Color: blue
Volume: 80g
Mix ratio: putty 100 : hardener 2
by volume

Rust Reventive Repairing Agent

